

LL Series DVRs - 100 fps + SATA+ Mouse



Magyar Nyelv Támogatás

RS485-LAN

Network controller for:
DVRs, Speed Dome Cameras
and CMS Software



LL Series Digital Video Recorder

Using real time recording speed in

CIF and 6fps speed in D1 resolution with most modern **H.264** compression format you

can save HDD capacity and bandwidth in remote monitoring. Advanced features are **1 SATA HDD**

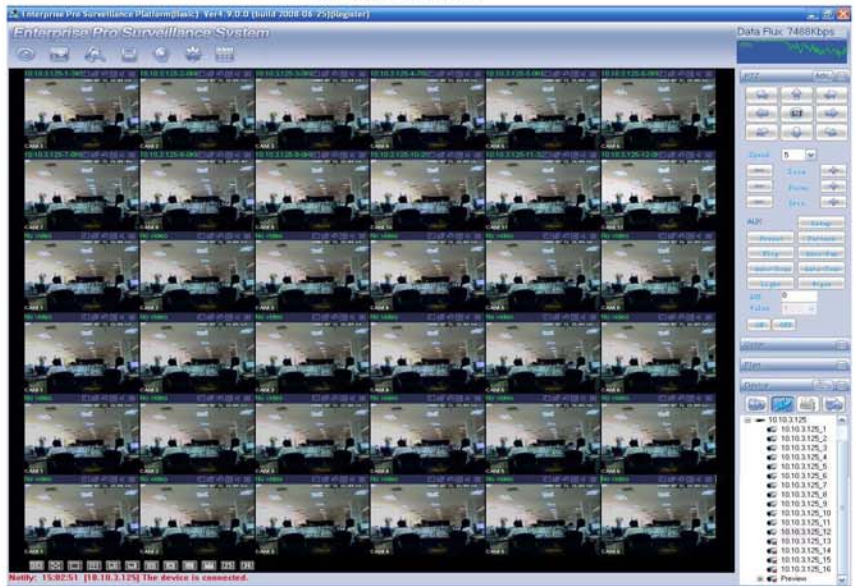
support, network keyboard to control multiple DVRs. Camera lock and masking detection with

redundant recording, Alarm, Motion, E-mail, ... built in to LL Serie Recorders are important factors.

Dual stream recording, LAN broadcasting with low and high quality bandwidth.

Model	
DVR-04LL	4 channel Digital Video Recorder/ 4 channel Audio Recorder - 100 fps/CIF - 25 fps/D1
System	
Main Processor	High performance embedded microprocessor
Operating System	Embedded LINUX
Pentaplex function:	live, recording, playback, backup & remote access
User Interface	GUI, onscreen menu tips
Control Device	Front panel, USB mouse, local keyboard, IR remote control, network keyboard
Input Method	Numerical/Character/Denotation
System Status	HDD status, data stream statistics, log record, bios version, on-line user etc.
Video	
Video Input	4 Channel BNC, 1.0Vp-p, 75Ohm
Video Output	main monitor output: 1x composite video or 1x VGA and 1x matrix composite video
Video Standards	PAL 625Line 50f/s
Video Compression Format	H.264
Video Resolution Format	
D1 (4CIF)	704 * 576
CIF	352 * 288
Video Recording	D1-6fps / CIF-25fps, dual stream
Video Display	Split Full and multiple screen display, 1 / 4
Tour Display Support	
Image Quality	1~6 level (level 6 is the best)
Privacy Masking	Self-defined four-sided zone for privacy masking for each camera
Camera Lock	Camera locked for users
Camera Adjustment	Adjust color according to different time period
Camera information displayed	title, time, video loss, camera lock, motion detection, recording
TV Output Adjustment	Adjust TV output color & display zone
Audio	
Audio Input	4 channel 200-2800mV -30Kohm
Audio Compression	ADPCM





PRO SURVEILLANCE Software for remote Recording and monitoring up to 1024 DVRs

Video Detection & Alarm

Motion Detection Zones:	192 [16 * 12] detection zones
Sensitivity:	1~6 (level 6 is highest)
Video Loss:	Trigger recording, PTZ movement, tour, alarm, e-mail & FTP
Camera Masking:	Trigger recording, PTZ movement, tour, alarm, e-mail & FTP
Alarm Input:	4 channel, programmable, ground, manual open/closed
Trigger recording:	PTZ movement, tour, alarm, e-mail & FTP
Relay Output:	2 ch., 30VDC, 1A, NO/NC, form-C.

Hard Disc

Hard Disc:	1 SATA ports, up to 1 HDD's may be supported.
HDD Management:	Hard disc hibernation technology, HDD faulty alarm & Redundancy

Record, Playback & Backup

Recording Mode:	Manual, continuous, video detection (including motion detection, camera masking, video loss), Alarm >Alarm >Video Detection >Continuous.
Recording Priority Manual:	
Recording Interval:	1 to 120 minutes (default: 60 minutes)
Overwrite Mode Support:	
Redundant recording supported:	
Search Mode:	Time/Date, Alarm, Motion Detection & exact search (accurate to second)
Playback:	2 channels playback simultaneously, Play, pause, Stop, rewind, fast play, slow play, next file, previous file, next picture, previous picture, next camera, previous camera, full screen, repeat, shuffle, backup selection.
Digital Zoom:	Selected zone can be zoomed into full screen during playback
Backup Mode:	Flash stick (USB)

Network

Interface:	RJ45 Port (10/100M)
Network Functions:	TCP/IP, DHCP, DDNS, PPPoE, Email, FTP
Remote Operation Monitoring:	PTZ control, playback, system setting, file download, log information

Auxiliary Interface

USB Interface:	2 ports, 1 for mouse control, 1 for backup
RS232:	local keyboard, PC communication
RS485:	PTZ control, multi protocol

Environmental

Power Supply:	12VDC-5A
Power Consumption:	20W
Operating Temperature:	0°C ~ +55°C
Power Consumption:	20W
Operating Humidity:	10% ~ 90%
Atmosphere Pressure:	86kpa ~ 106kpa
Dimensions:	375mm X 285mm X 45mm (W * D * H)
Weight:	4.0KG

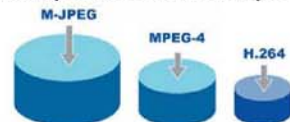
Accessories included to each DVR :

- DC power adapter 12VDC - 5A
- One Ethernet cable
- Four HDD cables
- Alarm & relay terminal blocks
- Extensional cable (for audio, loop & matrix)
- One remote control (including the battery)
- One USB mouse
- One CD (including DVR manual, client & small tools)
- A package of installation fittings.

Design for 2009



Compare of HDD consumption



3D Intelligent positioning function of PTZ Cameras supported