

LN Series DVRs - 400fps+SATA+DVD+Mouse



Magyar Nyelv Támogatás



RS485-LAN

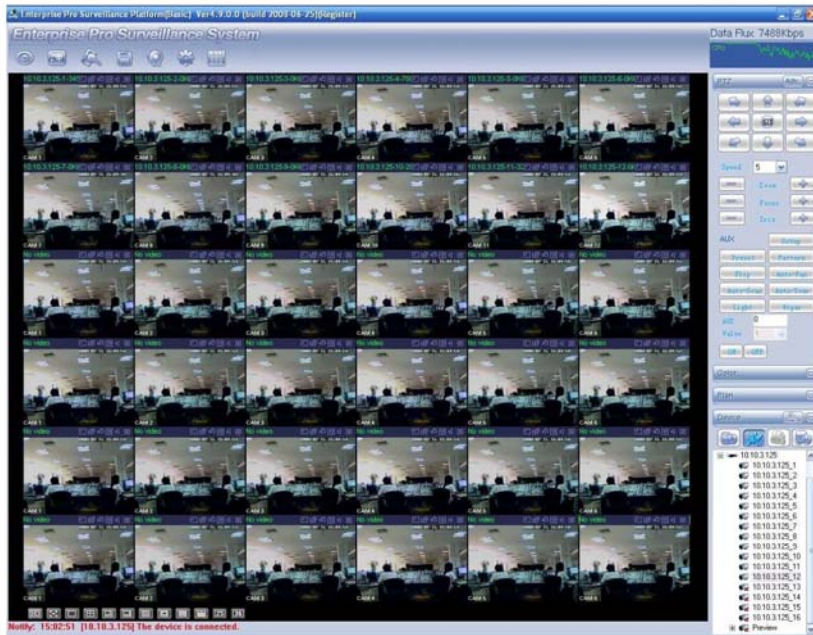
Network controller for:
DVRs, Speed Dome Cameras
and CMS Software



LN Series Digital Video Recorder is the best choice for installing surveillance system for hotels, ports, industrial and commercial buildings, state institutes and all the real estates, where high security requirements are in operation. Using real time recording speed in CIF and 6fps speed in D1 resolution with most modern **H.264** compression format you can save HDD capacity and bandwidth in remote monitoring. Advanced features are **4 SATA HDD** support, network keyboard to control multiple DVRs. Camera lock and masking detection with redundant recording, Alarm, Motion, E-mail, ... built in to LN Serie Recorders are important factors. Dual stream recording, LAN broadcasting with low and high quality bandwidth.

Model	
DVR-04LN	4 channel Digital Video Recorder/ 4 channel Audio Recorder - 100 fps/CIF - 25 fps/D1
DVR-08LN	8 channel Digital VideoRecorder/ 4 channel Audio Recorder - 200 fps/CIF - 50 fps/D1
DVR-16LN	16 channel Digital Video Recorder/ 4 channel Audio Recorder - 400 fps/CIF -100fps/D1
System	
Main Processor	High performance embedded microprocessor
Operating System	Embedded LINUX
Penitplex function:	live, recording, playback, backup & remote access
User Interface	GUI, on-screen menu tips
Control Device :	Front panel, USB mouse, local keyboard, IR remote control, network keyboard
Input Method	Numeral/Character/Denotation
System Status:	HDD status, data stream statistics, log record, bios version, on-line user etc.
Video	
Video Input	4/8/16 Channel, BNC, 1.0Vp-p, 75Ohm,
Video Output	main monitor output: 1x composite video or 1x YGA and 1x matrix composite video
Video Standards	PAL 625line 50f/s
Video Compression Format	H.264
Video Resolution Format	
D1(4CIF)	704 * 576
CIF	352 * 288
Video Recording	D1-6fps / CIF-25fps, dual stream
Video Display	Split Full and multiple screen display, 1 / 4 / 8 / 9 / 16
Tour Display Support	
Image Quality	1~6 level (level 6 is the best)
Privacy Masking	Self-defined four-sided zone for privacy masking for each camera
Camera Lock	Camera locked for users
Camera Adjustment	Adjust color according to different time period
Camera information displayed	title, time, video loss, camera lock, motion detection, recording
TV Output Adjustment	Adjust TV output color & display zone
Audio	
Audio Input	4 channel 200-2800mV -30Kohm
Audio Compression	ADPCM





PRO SURVEILLANCE Software for remote Recording and monitoring up to 1024 DVRs

Video Detection & Alarm

Motion Detection Zones:	192 (16 * 12) detection zones
Sensitivity:	1~6 (level 6 is highest)
Video Loss	Trigger recording, PTZ movement, tour, alarm, e-mail & FTP
Camera Masking	Trigger recording, PTZ movement, tour, alarm, e-mail & FTP
Alarm Input	4/8/16 channel, programmable, ground, manual open/closed
Trigger recording	PTZ movement, tour, alarm, e-mail & FTP
Relay Output	6 channel, 30VDC, 1A, NO/NC, form-C

Hard Disc

Hard Disc	4 SATA ports, up to 4 HDD's may be supported.
HDD Management	Hard disc hibernation technology, HDD faulty alarm & Redundancy

Record, Playback & Backup

Recording Mode	Manual, continuous, video detection (including motion detection, camera masking, video loss), Alarm
Recording Priority Manual	>Alarm >Video Detection >Continuous
Recording Interval	1 to 120 minutes (default: 60 minutes)
Overwrite Mode Support	
Redundant recording supported	
Search Mode	Time/Date, Alarm, Motion Detection & exact search (accurate to second)
Playback	4 channels playback simultaneously, Play, pause, Stop, rewind, fast play, slow play, next file, previous file, next picture, previous picture, next camera, previous camera, full screen, repeat, shuffle, backup selection.
Digital Zoom	Selected zone can be zoomed into full screen during playback.
Backup Mode	Flash stick / DVD WR/ USB HDD/ USB CDRW/DVD-RW

Network

Interface	RJ-45 Port (10/100M)
Network Functions	TCP/IP, DHCP, DDNS, PPTP, Email, FTP
Remote Operation Monitoring	PTZ control, playback, system setting, file download, log information

Auxiliary Interface

USB Interface	2 ports, 1 for mouse control, 1 for backup
RS232	local keyboard, PC communication
RS485	PTZ control, multi protocol

Environmental

Power Supply	230V 50Hz / 110V 60Hz
Power Consumption	25W/30W/40W
Operating Temperature	0°C ~ 55°C
Power Consumption	25W/30W/40W
Operating Humidity	10% ~ 90%
Atmosphere Pressure	86kpa ~ 106kpa
Dimensions	2U, 440mmx460mmx89mm (W * D * H)
Weight	8.0KG

Accessories included to each DVR :

- One power cable
- One Ethernet cable
- Four HDD cables
- Alarm & relay terminal blocks
- Extensional cable (for audio, loop & matrix)
- One remote control (including the battery)
- One USB mouse
- One CD (including DVR manual, client & small tools)
- A package of installation fittings
- SONY DVD Writer built in

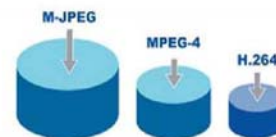
Design from 2006/2007



Design for 2009



Compare of HDD consumption



3D intelligent positioning function of PTZ Cameras supported